

Duxbury Beach

Wednesday, May 4, 2005

Duxbury Clipper

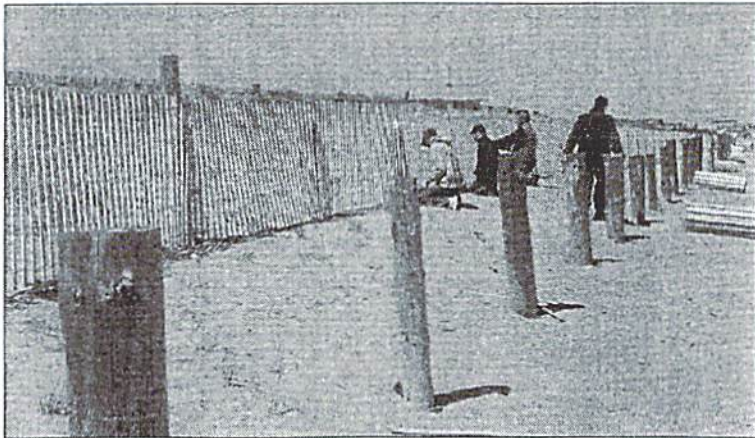
Repairing the Beach

From dune rebuilding to beach grass planting, Duxbury Beach has been alive with activity lately as part of the beach's restoration. The work was funded by the Duxbury Beach Reservation; the beach grass planting was coordinated by the Duxbury Beach Preservation Society and Duxbury Conservation Agent Joe Grady.

Photos by Jim O'Connell



Winter storm waves eroded dunes along Duxbury Beach, requiring the strategic placement of 5,000 cubic yards of sand to rebuild them. Freddie Nava & Company did the heavy lifting.



As in past years, winter coastal storms destroyed several miles of snow and sand fencing along Duxbury Beach, requiring the re-installation of 24,000 linear feet of new fence. Double rows of fencing are used in specific areas both for capturing wind-blown sand and for discouraging pedestrian access to the fragile dunes.



Beach grass is a hearty dune plant that captures wind-blown sand, helping to rebuild the dune higher and wider. Slightly less than most years, 10,000 culms of beach grass were planted.